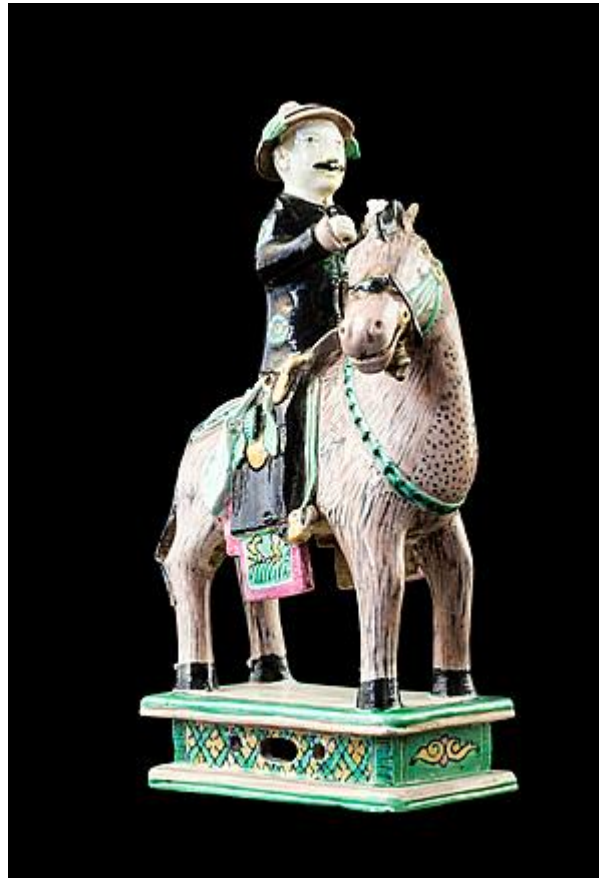




COHEN & COHEN



CHINESE EXPORT PORCELAIN AND ORIENTAL ART



Chinese porcelain figure group of a horse and rider

Yongzheng period circa 1730-35

European or Chinese Market

Height: 8½ inches; 22cm

from the Golden Gate Collection, GG1134

Priced in US dollars

\$8,250

This item is located in the USA in the state of California. Shipping from there is at the buyer's expense. Please enquire if you would like to know more.

A Chinese biscuit porcelain model of a horse and male rider, enamelled in green, black, yellow, aubergine and pink, on a rectangular base.

This figure group follows the style of earlier Kangxi-era examples of equestrian subjects. The form is derived from Ming roof tile figures, and these Qing examples may have been made as amusements for Westerners as well as for the Chinese market.

Sargent, 1991, cites a very similar figure in eighteenth-century English Astbury-type ware from the Nelson-Atkins Museum of Art, Kansas City, Missouri, as evidence that the form was known in Europe.

References: Similar groups are recorded in the Anthony Rothschild Collection (Krahl, 1996, p476); the Yves Mallié de Fonfais Collection, Paris (Buerdeley, 1974, p251); the Richard Bennett Collection, London, illustrated in Gorer & Blacker (1911), plate 93; another illustrated in Hobson 1925, plate VI; the Metropolitan Museum of Art, New York, a pair from the Edwin Vogel collection; Cohen & Motley 2008, No 1.2, a similar example with a lady rider & 1.3 and 1.5 two models with standing grooms.